

KJ-COMTECH 75Ω connectors employ three forms of latching mechanism.

Standard types have a snap-on mechanism permitting easy push-on, pull-off, plugs mate with all jacks but employ a sliding

Series SMZ-75Ω



Microminiature Coaxial Connector

Technical Data

Material Data

Screw-On type

Receptacles with Solder End

PCB Connector

Termination

Snap-On type

Receptacles with Solder End

PCB Connectors

Adaptor within-Series

Microminiature Coaxial Connector

Description

KJ-COMTECH 75Ω connectors employ three forms of latching mechanism. Standard types have a snap-on mechanism permitting easy push-on, pull-off, plugs mate with all jacks but employ a sliding

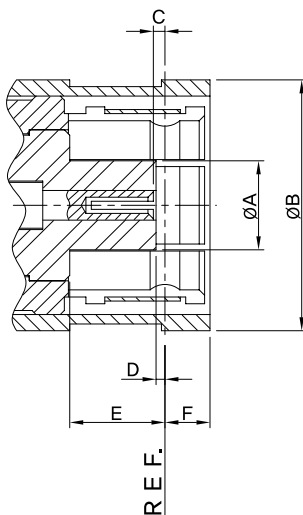
- 1) Screw-on
To connect push plug onto jack until retaining mechanism snaps together. Then rotate the knurled, nickel plated nut 'B' clockwise to lock.
- 2) Snap-on
There are no external moving parts on either jack or plug. To connect push plug onto jack until retaining mechanism snap together. To disconnect pull firmly on plug body.

Contents

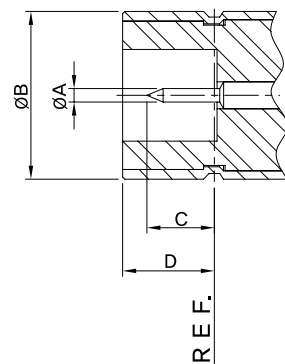
Microminiature Coaxial Connector	186
Technical Data	187
Material Data	187
Screw-On type	188
Receptacles with Solder End	188
PCB Connector	189
Termination	189
Snap-On type	190
Receptacles with Solder End	190
PCB Connectors	191
Adaptor within-Series	191

Interface Dimensions

Plug (Male)



Jack (Female)



Interface Dimensions in mm/inch

	Plug (Male)		Jack (Female)	
	Min.	Max.	Min.	Max.
A	-	3.33/0.131	0.48/0.019	0.53/0.021
B	6.25/0.246	-	6.20/0.244	6.25/0.246
C	0.18/0.007	0.94/0.037	3.40/0.134	2.97/0.117
D	0.18/0.007	-	3.48/0.137	3.53/0.139
E	3.58/0.141	-	-	-
F	-	1.98/0.078	-	-

Technical Data

Requirement

ELECTRICAL DATA

Impedance
Frequency range
RF leakage (between 2 ÷ 3 GHz)

Specification

TEST REQUIREMENTS

75Ω
DC 6GHz
≥ 55 dB

Dielectric withstanding voltage (at sea level)
Working voltage (at sea level)
Insulation resistance

1500 V rms, 50 Hz
≤ 500 V rms, 50 Hz
≥ 10⁹ MΩ

MECHANICAL DATA

Engagement force
Disengagement force
Contact captivation
Durability (matings)
Contact captivation
Durability (matings)

TEST REQUIREMENTS

8 N ~ 63 N / 1.8 lbs ~ 14.2 lbs
8 N ~ 20 N / 1.8 lbs ~ 4.5 lbs
≥ 10 N / 2.3 lbs
≥ 500
≥ 27 N / 6.1 lbs
≥ 500

Material Data

Connector Part	Material		Plating
	Male	Female	
PIN	Beryllium-Copper	Brass	Gold
INSULATOR	PTFE	PTFE	-
BODIES	Brass	Brass	Gold
JACK	Brass	-	Gold
SPRING RING	Beryllium-Copper	-	Gold
COUPLING	Brass	-	Gold
NUT	-	Brass	Gold
WASHER	-	Brass	Gold
CRIMP FEMALE	Brass	Brass	Gold

Screw-On type

Cable Connectors

Cable entry crimp

• Straight Cable Plugs (male)
RG179

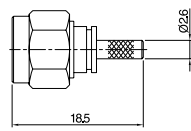


fig.1

• Straight Cable Plugs (male)
RG59

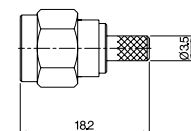


fig.2

• Right Angle Plug(male)
RG179

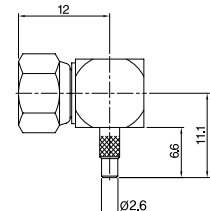


fig.3

• Bulkhead Cable Jack(female)
RG179

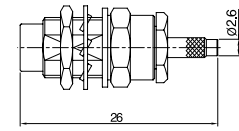


fig.4

Fig	Type	Code		Cable Goup (example)	Plating			AS-In	Note
		Old Code	New Code		Pin	Body	Coupling		
1	SMZ(SC)75-PC-179	K317-080-000	CN2611X04-001-1/1	X04 RG179	Gold	Gold	Gold		
2	SMZ(SC)75-PC-59	K317-083-000	CN2611X09-001-1/1	X09 RG59	Gold	Gold	Gold		
3	SMZ(SC)75-LPC-179	K317-176-000	CN2631X04-001-1/1	X04 RG179	Gold	Gold	Gold		
4	SMZ(SC)75-BJ-3C-179	K317-214-000	CN2622X04-001-1/1	X04 RG179	Gold	Gold	-		

Receptacles with Solder End

Recaptacle Jack(female)

• Bulkhead mounted

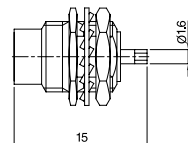


fig.1

Fig	Type	Code		Plating			Mounting Hole	AS-In	Note
		Old Code	New Code	Pin	Body	Coupling			
1	SMZ(SC)75-J-BR	K317-552-000	CN2626000-001-1/1	Gold	Gold		ML29		

PCB Connector

• Straight PCB Jack (female)

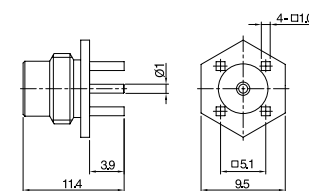


fig.1

• Right Angle PCB Jack (female)

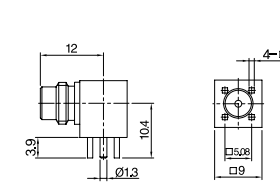


fig.2

Fig	Type	Code		Plating		Mounting Hole	AS-In	Note
		Old Code	New Code	Pin	Body			
1	SMZ(SC)75-J-4R-R	K317-427-000	CN2651000-001-1/1	Gold	Gold	ML30		
2	SMZ(SC)75-LJ-4R-R	K317-666-000	CN2653-001-1/1	Gold	Gold	ML31		

Termination

• Plug(male)

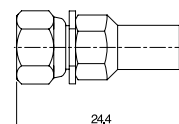


fig.1

Fig	Type	Code		Plating			AS-In	Note
		Old Code	New Code	Pin	Body	Coupling		
1	SMZ(SC)75-P-TERM	K317-901-000	CN2691-001-1/1	Gold	Gold	Gold		0.25W

Snap-On type

Cable Connectors

Cable entry crimp

• Straight Cable Plugs (male)
RG179

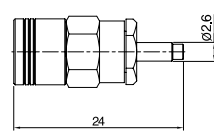


fig.1

• Straight Cable Plugs (male)
RG59

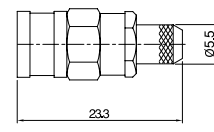


fig.2

• Right Angle Cable Plug(male)
RG179

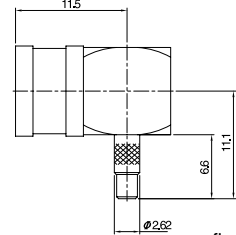


fig.3

• Right Angle Cable Plug(male)
RG59

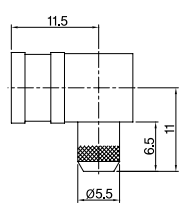


fig.4

• Bulkhead Cable Jack(female)
RG179

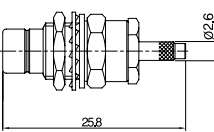


fig.5

• Bulkhead Cable Jack(female)
RG59

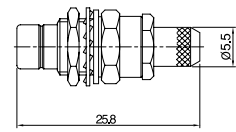


fig.6

Fig	Type	Code		Cable Goup (example)	Plating			AS-In	Note
		Old Code	New Code		Pin	Body	Coupling		
1	SMZ(SN)75-P3C-179	K317-075-000	CN2711X04-001-1/1	X04 RG179	Gold	Gold	Gold		
2	SMZ(SN)75-P3C-59	K317-076-000	CN2711X09-001-1/1	X09 RG59	Gold	Gold	Gold		
3	SMZ(SN)75-LPC-179	K317-161-000	CN2731X04-001-1/1	X04 RG179	Gold	Gold	Gold		
4	SMZ(SN)75-LPC-59	K317-160-000	CN2731X09-001-1/1	X09 RG59	Gold	Gold	Gold		
5	SMZ(SN)75-BJ-3C-179	K317-314-000	CN2722X04-001-1/1	X09 RG59	Gold	Gold	-		
6	SMZ(SN)75-BJ-3C-59	K317-313-000	CN2722X09-001-1/1	X09 RG59	Gold	Gold	-		

Receptacles with Solder End

Recaptacle Jack(female)

• Bulkhead mounted

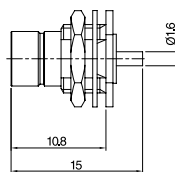


fig.1

Fig	Type	Code		Plating			Mounting Hole	AS-In	Note
		Old Code	New Code	Pin	Body	nut& washer			
1	SMZ(SN)75-BJ-R	K317-553-000	CN2722000-001-1/1	Gold	Gold	Gold	ML29		

PCB Connectors

• Straight PCB Jack(female)

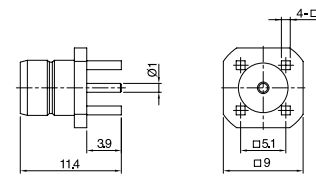


fig.1

• Right Angle PCB Jack(female)

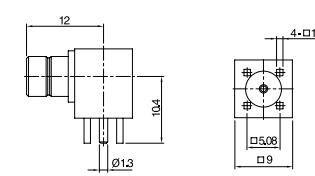


fig.2

Fig	Type	Code		Plating		Mounting Hole	AS-In	Note
		Old Code	New Code	Pin	Body			
1	SMZ(SN)75-J-4R-R	K317-426-000	CN2751000-001-1/1	Gold	Gold	ML30		
2	SMZ(SN)75-LJ-4R-R	K317-665-000	CN2753000-001-1/1	Gold	Gold	ML31		

Adaptor within-Series

• Jack to Jack(female)

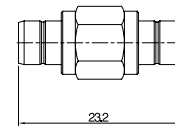


fig.1

• Plug to Plug(male)

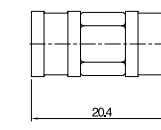


fig.2

Fig	Type	Code		Plating		AS-In	Note
		Old Code	New Code	Pin	Body		
1	SMZ(SN)75-A-JJ	K317-701-000	AD2712-001-1/1	Gold	Gold		
2	SMZ(SN)75-A-PP	K317-702-000	AD2711-001-1/1	Gold	Gold		

Termination

• Plug(male)

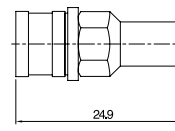
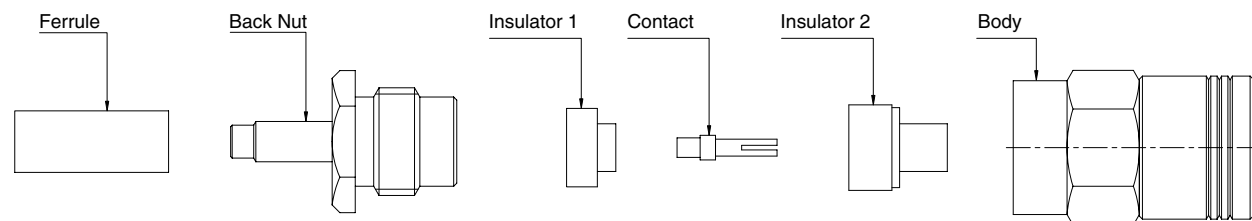


fig.1

Fig	Type	Code		Plating		AS-In	Note
		Old Code	New Code	Pin	Body		
1	SMZ(SN)75-P-DUMMY	K317-902-000	CN2791-001-1/1	Gold	Gold		1/4W

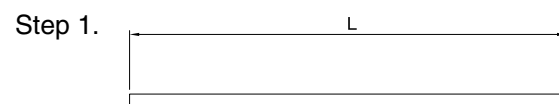
● STANDARD CRIMP



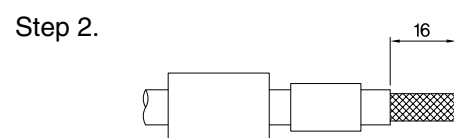
● CONNECTORS

- K315-082
- K317-075
- K317-077
- K317-312
- K317-313
- K317-314

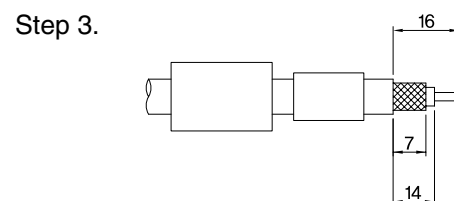
1. Cut the cable as much as required.



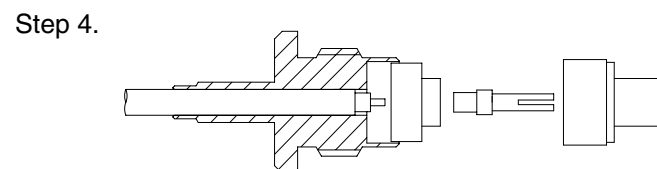
2. Insert the ferrule and the sleeve into the cable and strip off the outer seath.



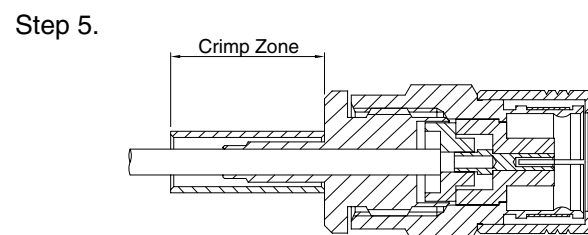
3. Strip off the out conductor and the center conductor as shown in the diagram.



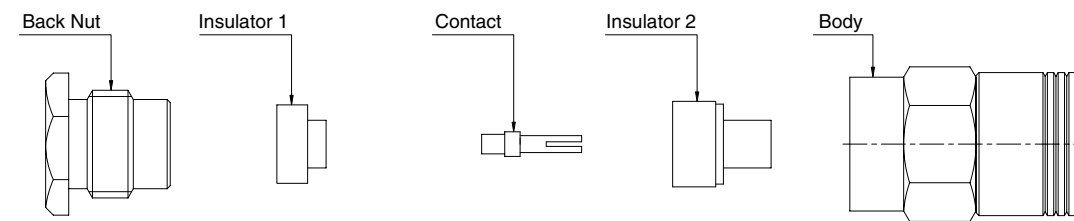
4. After soldering the center conductor, insert the back nut, contact, Insulator in the order named.



5. After inserting the body into the back nut and tightening with the coupling torque put in the groove of the body, tighten or contract the ferrule, shrink sleeve in the order named.



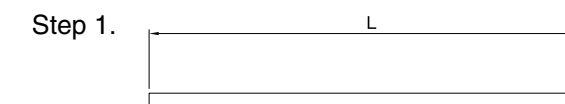
● STANDARD Clamp



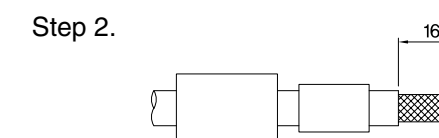
● CONNECTORS

- K317-078
- K317-079

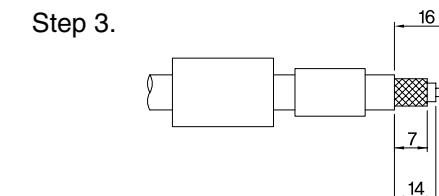
1. Cut the cable as much as required.



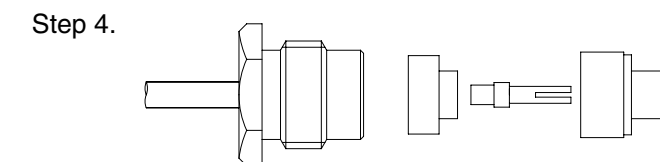
2. Insert the back nut and the clamp into the cable and strip off the outer seath.



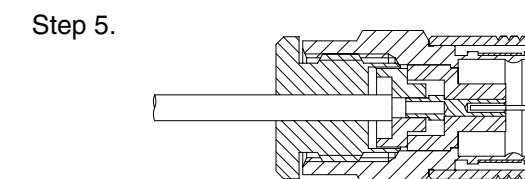
3. Strip off the out conductor and the center conductor as shown in the diagram.



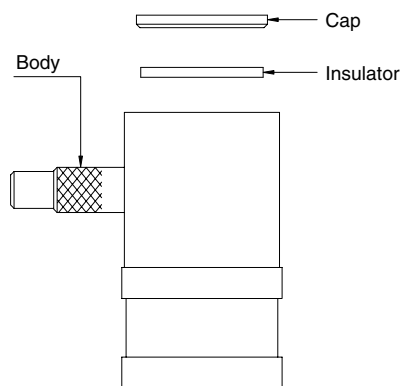
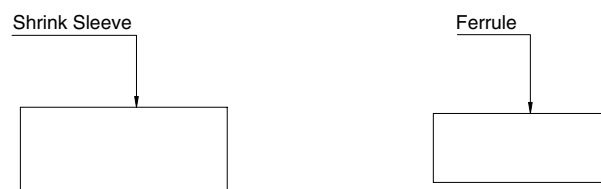
4. After soldering the center conductor, Insert the Insulator.



5. Insert the back nut into the body and screw the body putting it in the groove of the body.



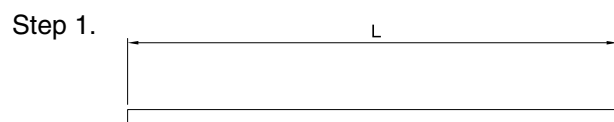
● RIGHT ANGLE CRIMP



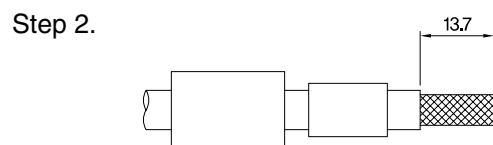
● CONNECTORS

- K317-161
- K317-162

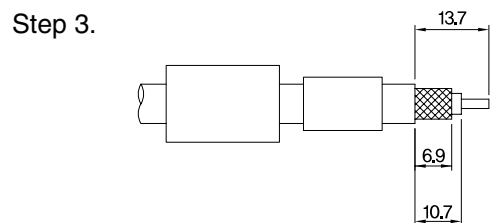
1. Cut the cable as much as required.



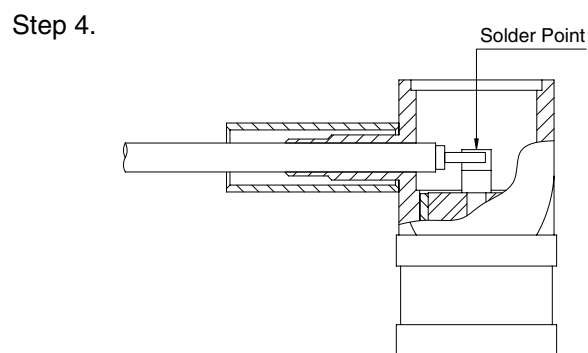
2. Insert the ferrule and the sleeve and strip off the outer seath.



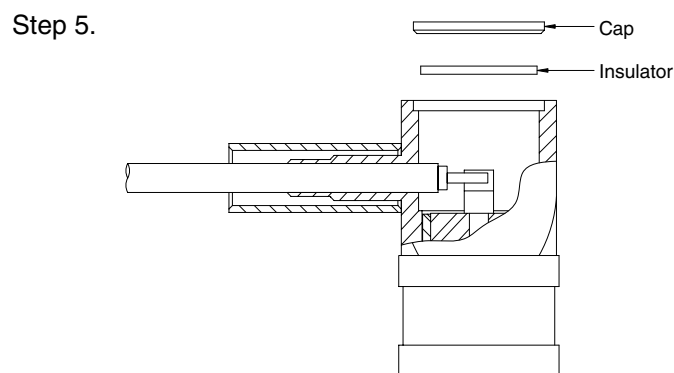
3. Strip off the out conductor and center conductor as shown in the diagram.



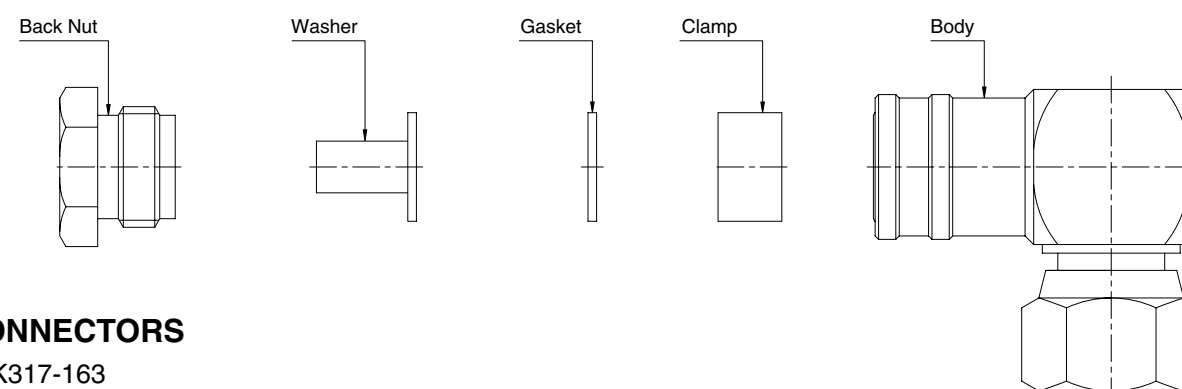
4. Insert the cable into the body and solder the soldering point.



5. After inserting the ferrule, shrink sleeve and compacting, contracting in the order named, seal up the Insulator, the cap in the same order.



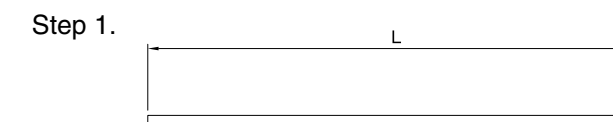
● STANDARD CLAMP



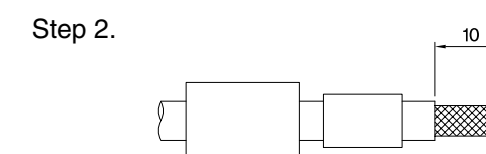
● CONNECTORS

- K317-163
- K317-164

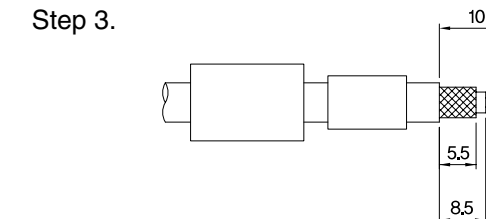
1. Cut the cable as much as required.



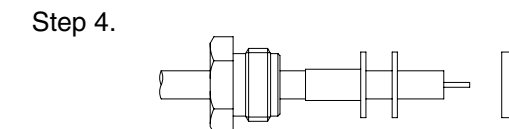
2. Insert the back nut, the washer, the gasket, the clamp in the order named and strip off the outer seath.



3. Strip off the out conductor and the center conductor as shown in the diagram.



4. Attach the outer conductor to the above of the clamp equally and insert the Insulator.



5. After inserting the cable into the body and soldering the solder point and seal up the Insulator, the cap in the order named.

